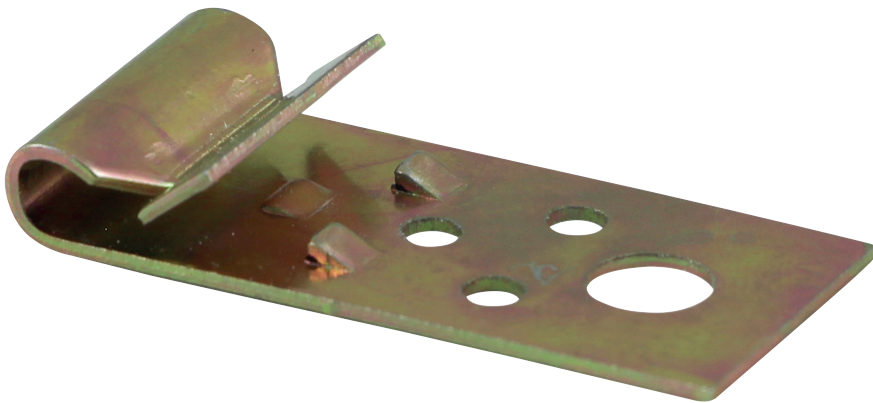


TECHNICAL INFORMATION FOR

---

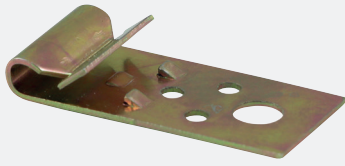
# VERTICAL FLANGE CLIP

---



TECHNICAL DATA SHEET

## VERTICAL FLANGE CLIPS



- High strength vertical flange clip for fixing suspended wire and lighting to steel "C" section purlins.



## FEATURES



- Gripping barbs for additional purlin purchase.
- Zinc & Yellow Passivated for increased corrosion resistance.
- Material: Pressed steel.
- Fixture may be bolted to clip using larger M6 hole.
- Full batch traceability.

## PRODUCT RANGE

**YELLOW**

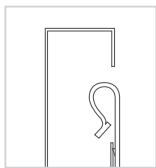
Product Code	Size (mm)	Min. Purlin Gauge (mm)	Max. Purlin Gauge (mm)	Box Qty	Carton Qty
VFC2042	20 x 42	1.5	2.5	100	1800

## INSTALLATION DATA

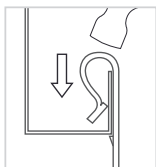
Product Code	Width W (mm)	Height H (mm)	Depth A (mm)	Large Hole Ø (mm)	Small Hole Ø (mm)
VFC2042	20	42	6	6.5	3.0

\*all figures stated are approximate and for reference only.

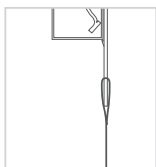
## INSTALLATION GUIDELINES



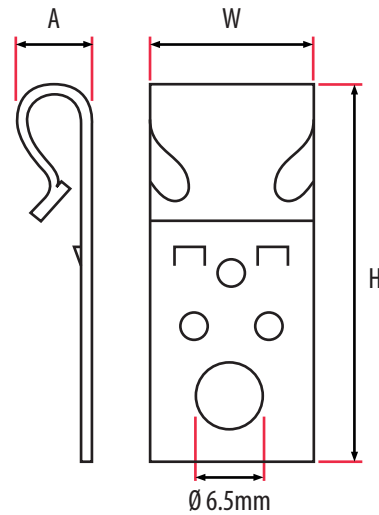
Place hook over the vertical flange of the "C" purlin.



Tap into place with a hammer.



Connect drop wire or chains through the "eye" of the clip.



W	Width
H	Height
A	Depth

## TECHNICAL DATA



Size Ø (mm)	20 x 42
Rec. Tensile Load (kN) N <sub>rec</sub>	0.72
Max Rec. Load (kg)	72