



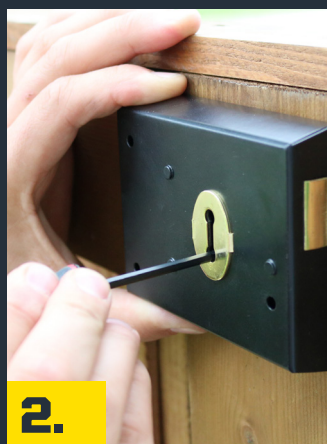
HOW TO FIT...

RIM DEAD LOCK



1.

Decide the height on the door where the lock is to be fitted. Hold the locks against the door with the lock face flush with the door edge. With your bradawl or pencil, mark the top and bottom of the keyhole.



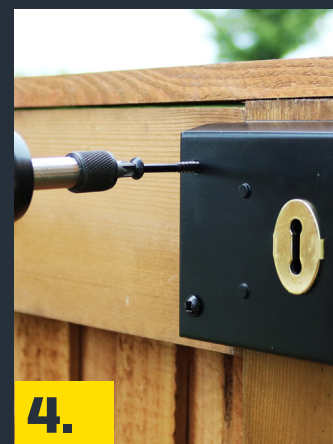
2.

Reposition the lock face, with your bradawl or pencil, mark the centre of the square spindle hole and the top and bottom of the keyhole.



3.

Drill through the door at the top and bottom marks to make a large enough hole for a key to be turned.



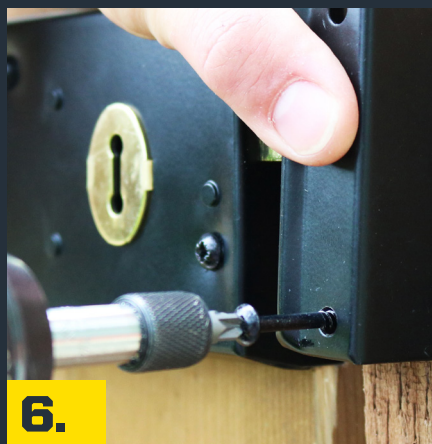
4.

Attach the rim lock to the surface of the door with woodscrews.



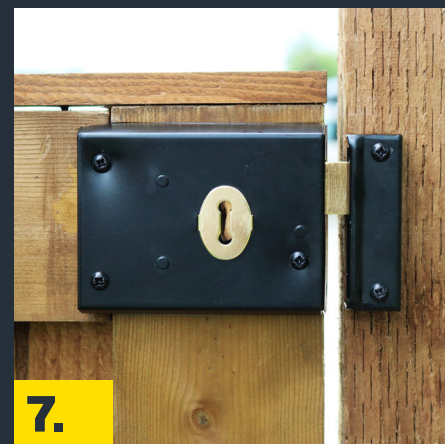
5.

Close the door. Place the keep in line with the lock. Turn the key of the lock and throw the deadbolt into the keep.



6.

Attach the keep with woodscrews.



7.

Check gate / door opens and shuts without any catching.



www.TIMco.co.uk / www.TIMco.ie



sales@TIMco.co.uk / sales@TIMco.ie

UK: + 44 (0)1829 261111

N.Ireland: +44 (0) 2890992305

Ireland: +353 (0) 4763538

TI-RDL01-v1